

COMMUNICATION SOFTWARE

MA-725A-00-00

OPERATION MANUAL



Software License Agreement

This is an agreement for software license and the limited guarantee thereon. In order to use the software, you must enter into an agreement for the license with our company in the form of the following [Software License Agreement]. Upon your installing the software, you are regarded as giving your consent to this Software License Agreement. After fully confirming the details of the Agreement, and only when you can agree with the terms and conditions of this Agreement, you will install the software. If you do not accept these terms and conditions of use, you must cease the installation and promptly erase this product and reproductions thereof from the temporary memory or hard disk in or connected to your computer.

Software License Agreement

This Agreement prescribes for terms and conditions to grant nontransferable and nonexclusive license to customers (hereinafter referred to as "User") who intend to use such software as provided by AMADA WELD TECH CO., LTD. (hereinafter referred to as "Licensor"), in accordance with the provisions as follows:

Article 1 (Definitions)

1. The software products to be provided by Licensor under this Agreement (hereinafter referred to as the "Software") shall mean computer programs, documents and any other files contained in the media or compressed files to be provided, including any revised edition of the Software which may be provided through such certain services as designated by Licensor.
2. "Use" shall mean to install the Software into the storage or memory of a computer, or to run the Software on the CPU.
3. To "Install" shall mean to copy the Software into a hard disk drive or the similar storage device in an executable format.

Article 2 (Intellectual Property Right and Ownership)

1. Any and all the intellectual property rights and ownership, including the copyrights, in and to the media in which the Software is recorded as well as any and all the copies thereof which have been or will be produced, whether original or in the forms of copies or media, shall be owned by Licensor
2. Licensor will not assign or transfer any right in and to the Software to User.

Article 3 (Conditions for Licensing)

1. User may use the Software by installing the whole or a part of the Software to a computer.
2. User may use the Software installed in the computer only with the product delivered by Licensor.
3. User shall not be allowed to export the Software, directly or indirectly (including via the Internet), in violation of export regulations of Japan or any laws and regulations on export/import controls in other countries.

Article 4 (Prohibitions)

1. User shall not be allowed to assign, distribute or sublease the whole or a part of the Software, nor to create, assign, distribute or sublease the derivative works thereof, to any third person for whatever reasons without a prior written approval of Licensor.

2. User shall not be allowed to make any alteration, reverse engineering, disassembling, decompiling, translation, adaption, or the like to and for the Software, whole or part, by itself or using any third person.
3. User shall not be allowed to remove or make illegible any copyright notice, notice of trademark registration, and other credits appearing on the Software or displayed in the operation.
4. User shall be liable for any damage that may be suffered by Licensor resulting from it's violation of any of the provisions hereof.

Article 5 (Limitation of Guarantee and Liability)

1. Licensor does not guarantee that any and all the functions in the Software will operate normally in the operating environment of User.
2. Licensor may change the specifications of the Software without a prior notice, and does not guarantee, whether explicit or implicit, that the functionality and quality of the Software fit for User's particular purpose.
3. Licensor shall not be liable for any damage (including, but not limited to, loss of income or profit) that User may suffer from using the Software.

Article 6 (Duration)

1. This Agreement shall take effect as of the date when User has installed the Software.
2. User may terminate this Agreement at any time by destroying the Software obtained and the reproductions thereof made by User.
3. Licensor may terminate this Agreement without a prior notice to User in the case when Licensor considers that User is in violation of any provision of this Agreement. When User receives the notice of termination from Licensor, it shall immediately destroy the Software and the copies thereof purchased by User at its own cost, and inform Licensor of the fact in writing that it has destroyed them.

Article 7 (General Provisions)

1. If any provision of this Agreement is held inconsistent with any law, that provision shall be excluded from the Agreement, but the remaining provisions hereof shall not be affected and continue in full force and effect.
2. This Agreement shall be governed by the laws of Japan. The Tokyo District Court shall have competent and exclusive agreement jurisdiction for the first instance over any action arising in connection with this Agreement.

End

Thank you for purchasing our Communication Software **MA-725A-00-00**.
This operation manual describes its method of operation and precautions for use.
Read this operation manual carefully prior to use. Store appropriately for ready reference.

Contents

1. Operating Environment	1
2. Installation	2
3. Starting the Communication Tool	5
4. Performing the Ethernet Communication	6
(1) Changing the Communication Setting	6
(2) Starting the Communication.....	7
(3) Checking the Communication Contents	8
(4) Stopping the Communication.....	8
5. Performing the Serial Communication	9
(1) Changing the Communication Setting	9
(2) Starting the Communication.....	11
(3) Checking the Communication Contents	12
(4) Stopping the Communication.....	12
6. Checking the Communication Status	13
7. Outputting the Communication Data to File	14
8. Setting the Display Language	15
9. Setting the Log Format	16
10. Saving the Setting	17
11. Checking the Version	18

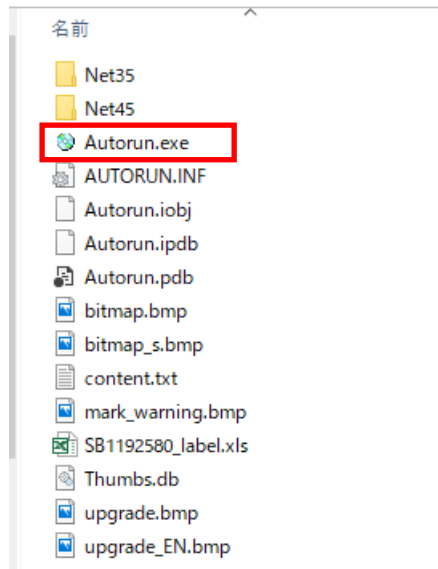
1. Operating Environment

Framework: .NET Framework 3.5, 4.5

OS: Windows7, Windows10

2. Installation

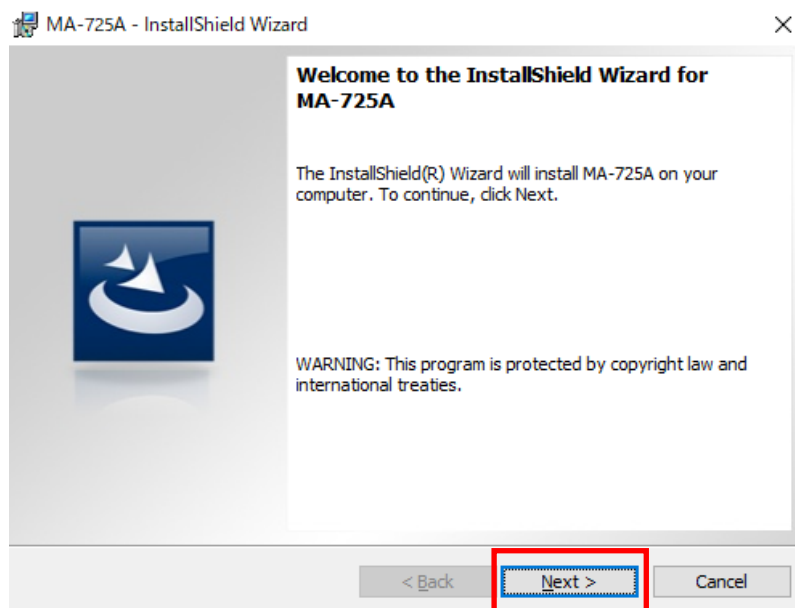
- 1) Load the installation CD into the CD drive.
- 2) From the Explorer, double-click the Autorun.exe.



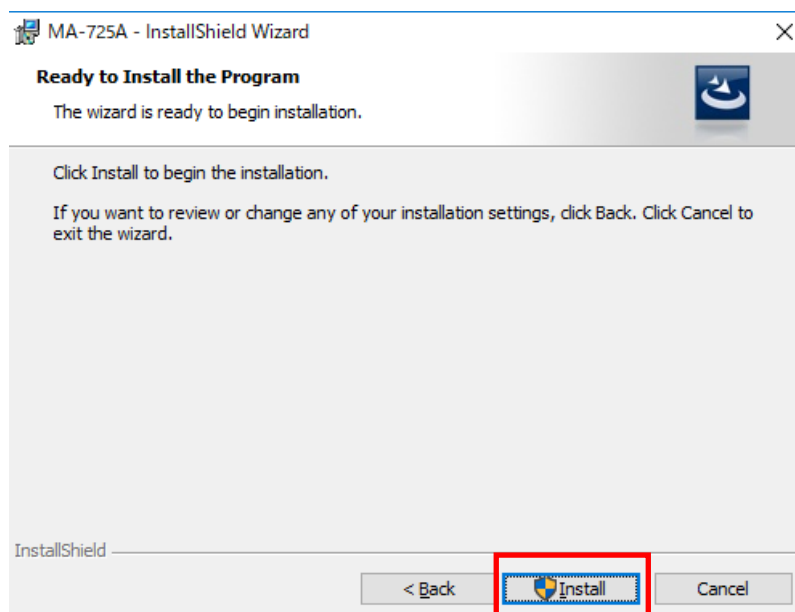
- 3) Specify the language and click the [Install Program] button to start installation.



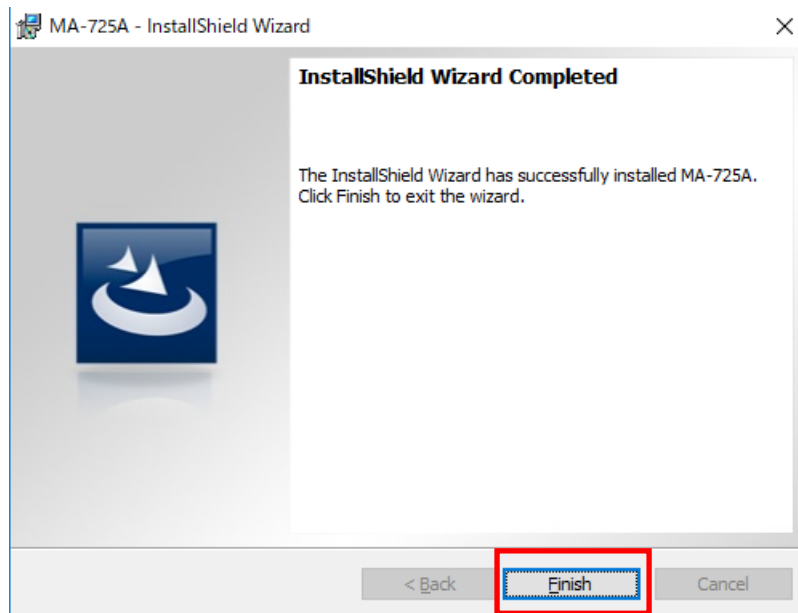
- 4) Click the [Next] button.



- 5) Click the [Install] button.



- 6) Installation is completed. Click the [Finish] button to exit.

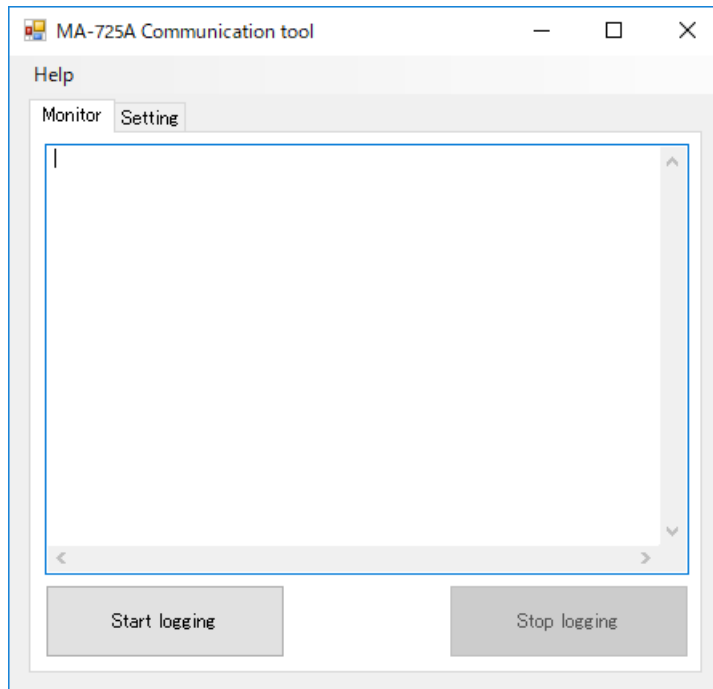


3. Starting the Communication Tool

Double-click the following icon on the client PC.



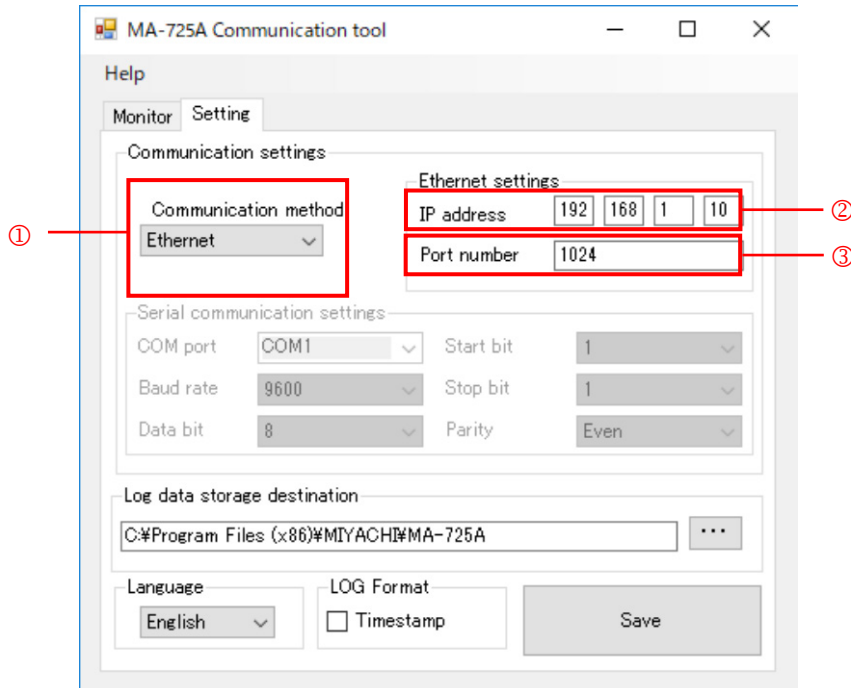
The main screen of the Communication tool is displayed.



4. Performing the Ethernet Communication

(1) Changing the Communication Setting

Display the Setting tab and perform the Ethernet communication setting.



① Communication method

Select [Ethernet].

② IP address

Sets the IP address for the Ethernet communication.

Only the value that can be converted into the IP address can be set.

An error check is performed when the tab is switched to Monitor.

<Error message>

“There is an error in the IP address.” (when the value that cannot be converted into the IP address is set)

③ Port number

Sets the port number for the Ethernet communication.

1 to 65535 can be set.

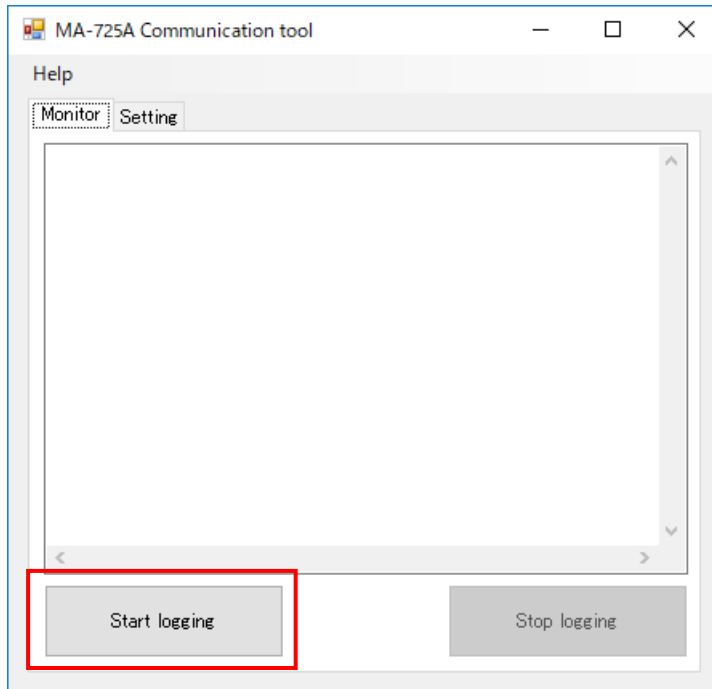
An error check is performed when the tab is switched to Monitor.

<Error message>

“Set the port number from 1 to 65535.” (when the value other than 1 to 65535 is set)

(2) Starting the Communication

Display the Monitor tab and click the [Start logging] button.
Connect to the **MM-400A** and wait the reception.



(3) Checking the Communication Contents

When the communication is performed, communication telegrams are displayed in the Monitor tab.

Records are displayed one per line.

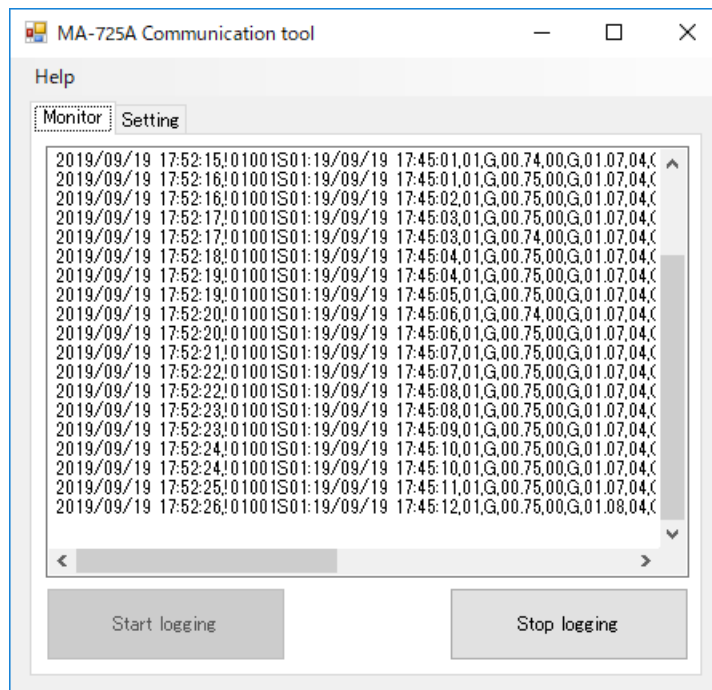
yyyy/MM/dd HH:mm:ss, communication telegram
(yyyy/MM/dd HH:mm:ss indicates the communication date and time.)

The communication date becomes valid when the [Timestamp] checkbox is turned on from the [LOG Format] on the Setting tab. When it is turned off, only the communication telegram is displayed.

When all the contents of the data is not completely displayed, you can check it by the horizontal scroll bar.

The latest record is displayed at the bottom and the screen is automatically scrolled down so that the latest record is displayed.

Up to 65000 records are displayed. When 65000 records are exceeded, the oldest data is erased and the latest record is added.



(4) Stopping the Communication

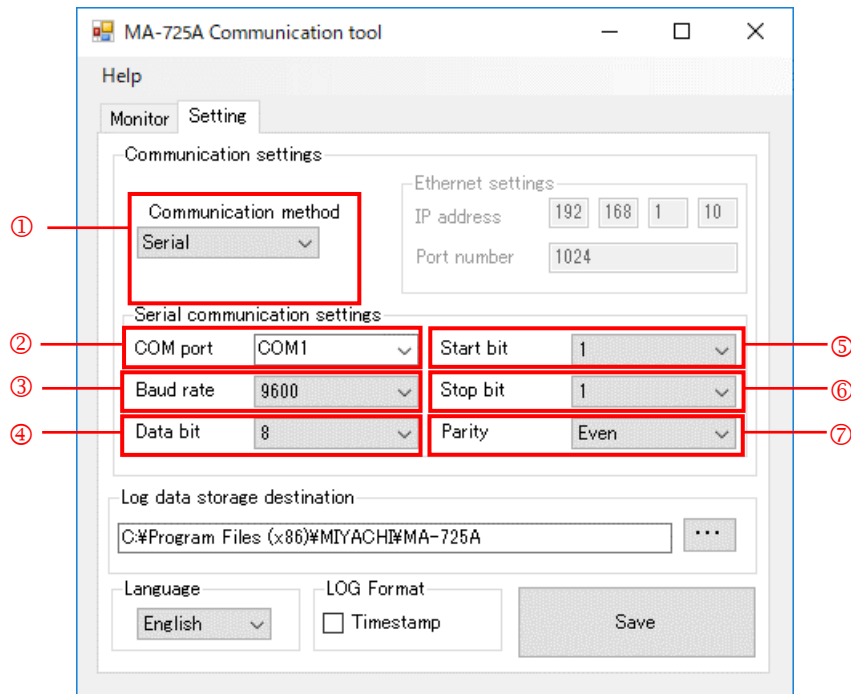
Click the [Stop logging] button.

The communication to the **MM-400A** is closed.

5. Performing the Serial Communication

(1) Changing the Communication Setting

Display the Setting tab and perform the serial communication setting.



① Communication method

Select [Serial].

② COM port

Sets the COM port for the serial communication.

When the application is started, the COM port being recognized by your PC can be selected.

Not the COM port above, you can set it manually.

An error check is performed when the tab is switched to Monitor.

<Error message>

“Set the COM port with “COM *”. (when the value that cannot be converted into the port name is set)

③ Baud rate

Sets the baud rate for the serial communication.

Select from the followings:

9600
14400
19200
38400
57600
115200

④ Data bit

Sets the data bit for the serial communication.

Select from the followings:

7
8

⑤ Start bit

Sets the start bit for the serial communication.

The setting is fixed to 1.

⑥ Stop bit

Sets the stop bit for the serial communication.

Select from the followings:

1
1.5
2

⑦ Parity

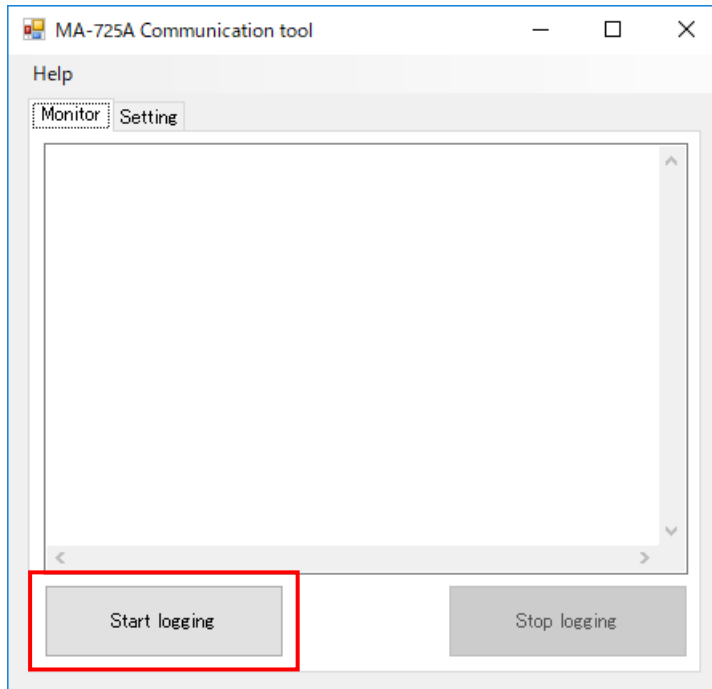
Sets the parity for the serial communication.

Select from the followings:

Even
Odd
None
Mark
Space

(2) Starting the Communication

Display the Monitor tab and click the [Start logging] button.
Connect to the **MM-400A** and wait the reception.



(3) Checking the Communication Contents

When the communication is performed, communication telegrams are displayed in the Monitor tab.

Records are displayed one per line.

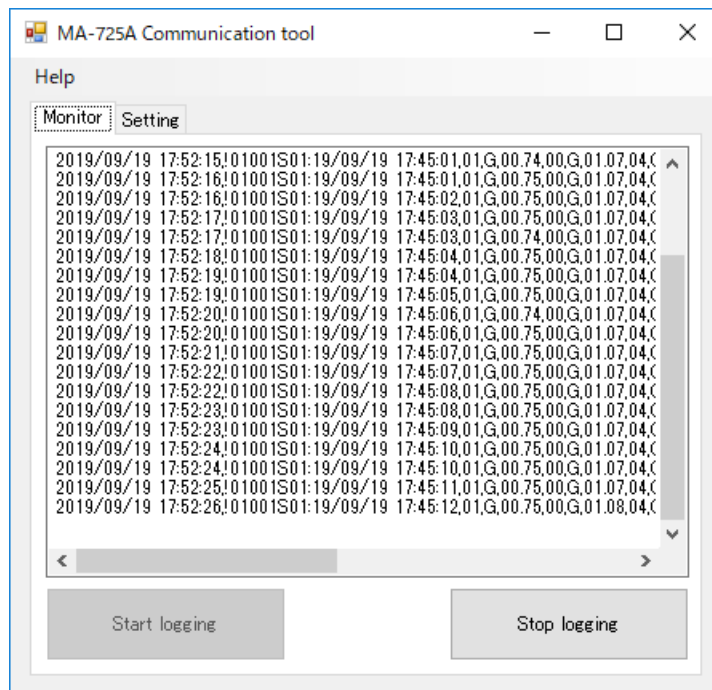
yyyy/MM/dd HH:mm:ss, communication telegram
(yyyy/MM/dd HH:mm:ss indicates the communication date and time.)

The communication date becomes valid when the [Timestamp] checkbox is turned on from the [LOG Format] on the Setting tab. When it is turned off, only the communication telegram is displayed.

When all the contents of the data is not completely displayed, you can check it by the horizontal scroll bar.

The latest record is displayed at the bottom and the screen is automatically scrolled down so that the latest record is displayed.

Up to 65000 records are displayed. When 65000 records are exceeded, the oldest data is erased and the latest record is added.





(4) Stopping the Communication

Click the [Stop logging] button.

The connection to the **MM-400A** is closed.

6. Checking the Communication Status

According to the communication status, the following icons are displayed in the task tray.

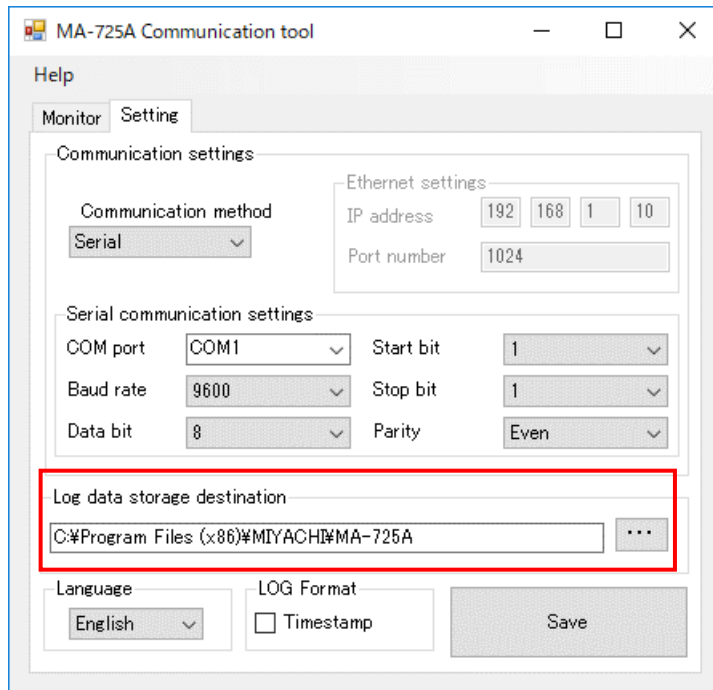
	At the time of logging start	At the time of logging stop
Display icon		
Display text when a mouse pointer is placed on the display icon	Connection destination according to the communication method Ethernet communication: IP address (Example: 192.168.0.1) Serial communication: Port name (Example: COM1)	Same as left

The display icon is updated when the communication status with the **MM-400A** is changed.

The display text is updated when the Setting tab is switched to the Monitor tab.

7. Outputting the Communication Data to File

The received data displayed in the Monitor tab is output to a file as a log data.



Output folder

Set the folder to output the file of communication data on the Setting tab.

It can be selected in the screen displayed by inputting text or clicking the [...] button.

An error check is performed when the tab is switched to Monitor.

<Error message>

“The log data storage destination does not exist.” (when a nonexistent folder is set)

A folder according to the communication method is created in the folder set for the Log data storage destination.

* When the folder has been already created, a file is output in the folder.

Communication method: Ethernet

Pass specified in the Log data storage destination¥IP address specified in the Ethernet communication setting¥output file

Communication method: Serial

Pass specified in the Log data storage destination¥COM port specified in serial communication setting¥output file

Storage format

CSV format

Filename

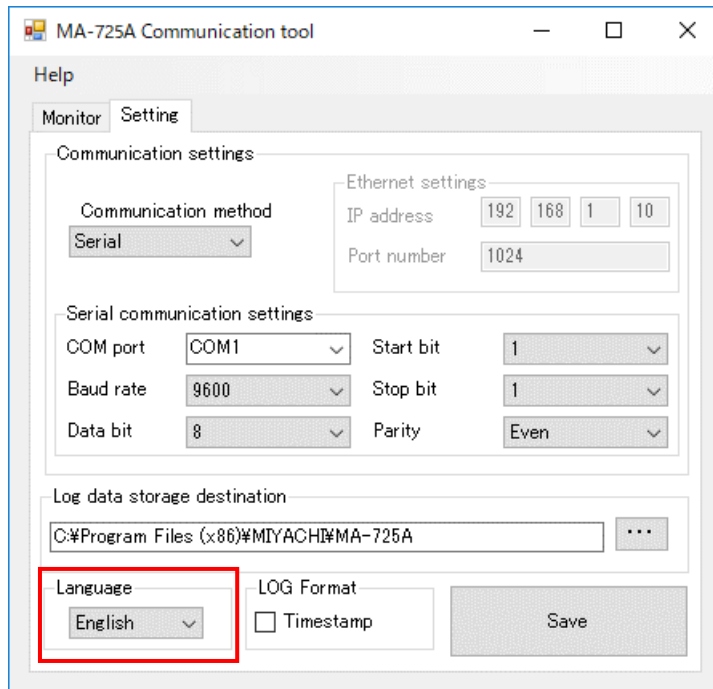
Log stating date and time (yyyyMMddHHmmss.csv) * Time in 24-hour notation

Output contents

1 telegram is 1 record and up to 65000 records are saved.

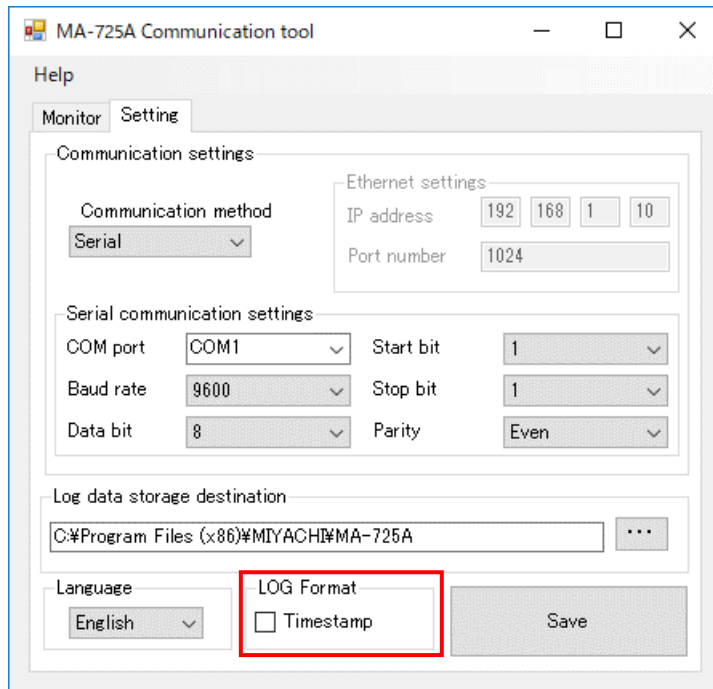
When 65000 records are exceeded, a new file is created.

8. Setting the Display Language



Select the display language from the combo box.

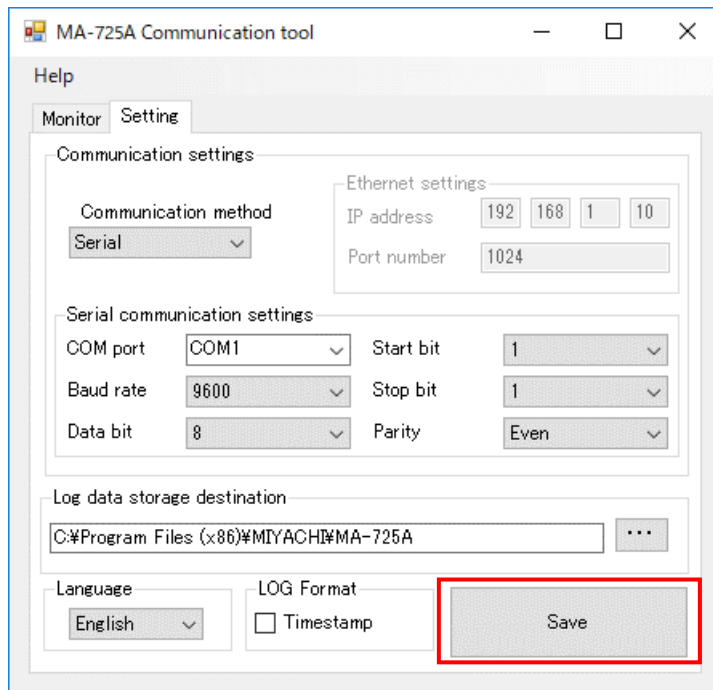
9. Setting the Log Format



When the [Timestamp] checkbox is turned on, the log is output by adding date at the beginning of the communication telegram. When turned off, the log is output as it is.

10. Saving the Setting

The setting items saved in the Setting tab are used as the initial setting at the next start of the application.



The setting items other than Start bit are saved by clicking the [Save] button.

11. Checking the Version

Select [Help] - [Version information] to check the version information of the Communication tool.

